

MECTRON PROPHYLAXIS FULL MOUTH PERIODONTAL TREATMENT



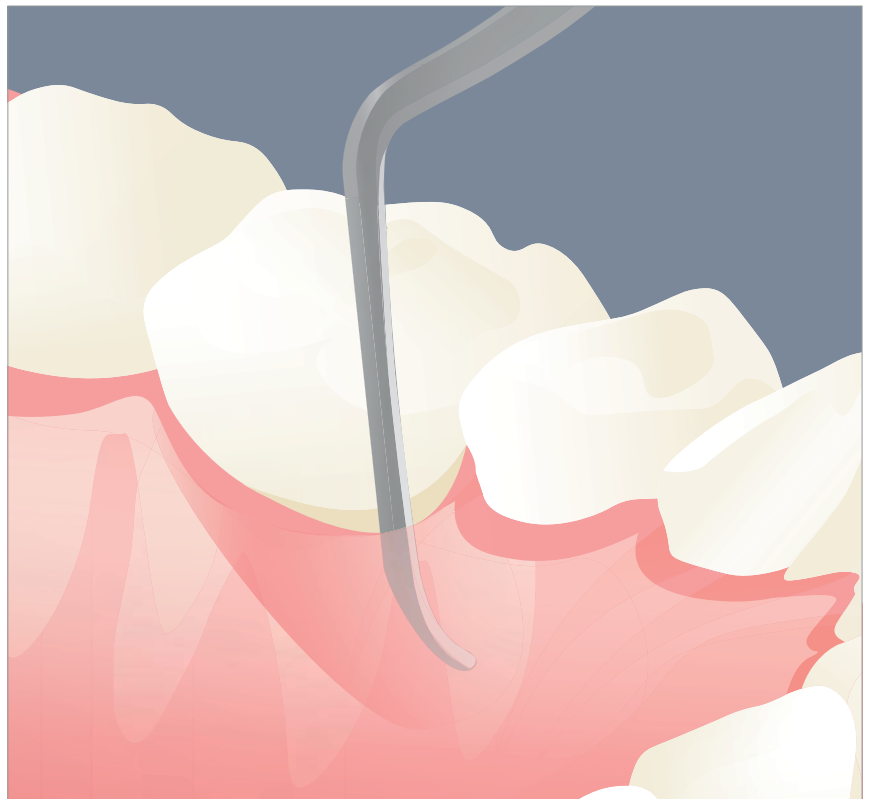
new!

mectron

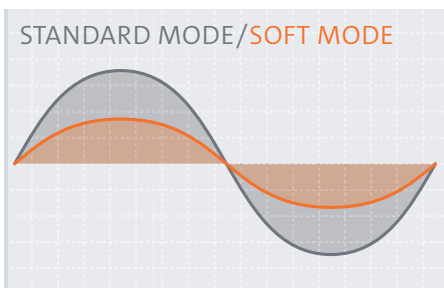
→ NEW PERIO ANATOMIC INSERTS FULL MOUTH PERIODONTAL TREATMENT

the inserts' shape allows an optimal access to the areas difficult to reach and characterized by deep periodontal pockets (furcations, root surfaces, concavities)

- specially designed to perform gentle and safe periodontal debridement
- the maximum efficacy without risk of injury to the soft tissues and the periodontal ligament
- the preserved tissues allow a new attachment formation
- elimination of endotoxins and necrotic cement
- the cavitation effect allows mechanical biofilm disruption, bacteria dispersion and periodontal pockets detoxification, thanks to the oxygen delivery



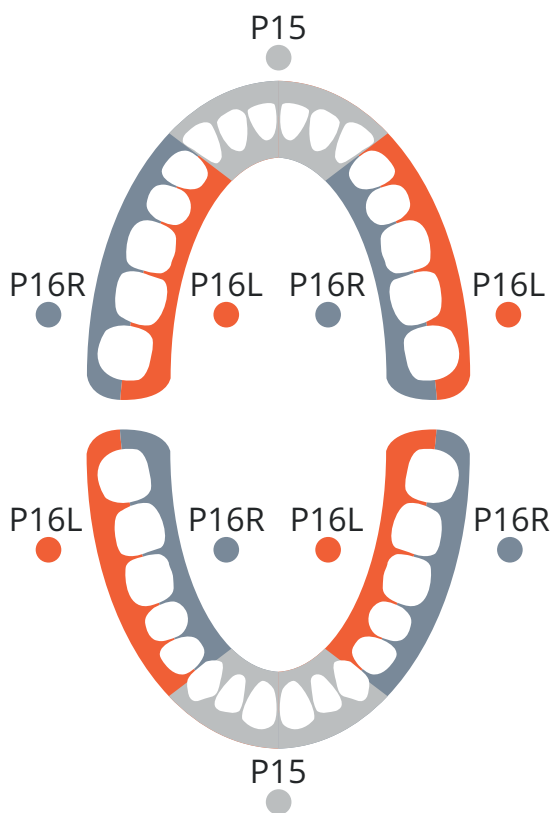
→ ULTRASOUNDS WITH SOFT MODE FUNCTION FOR AN ULTRA-GENTLE SCALING



The use of the inserts is recommended with scaling/perio 3 setting in combination with SOFT MODE function. SOFT MODE reduces the amplitude of the ultrasound oscillations in order to produce a gentle and efficient insert movement. The result: treatment efforts are met perfectly – sensitive patients are treated nearly painless and with maximum comfort.



→ FULL MOUTH PERIODONTAL TREATMENT CLINICAL INDICATIONS

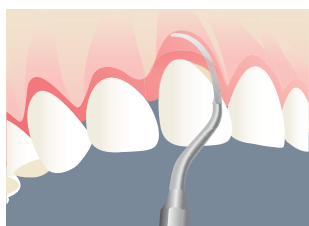


● P15
Anterior teeth

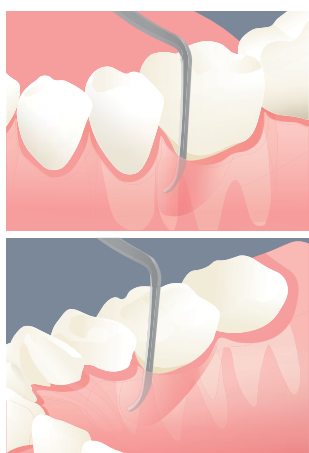
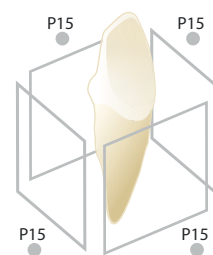
Easy access to canine and anterior teeth. Replaces manual curettes n° 1-2, 3-4, 5-6, 7-8.

● P16R – ● P16L
**Premolars and molars
left and right angled**

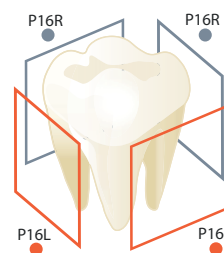
Recommended for an efficient root planing on molars and premolars. Replace manual curettes n° 11-12, 13-14, 15-16, 17-18.



P15: universal curette. Supra- and subgingival treatment. Recommended for the debridement of deep periodontal pockets.



P16R – P16L: right (P16R) and left (P16L) angled periodontal curettes. Subgingival concretions and biofilm removal from furcations and deep pockets. Recommended for supra- and subgingival interproximal spaces.



→ FULL MOUTH PERIODONTAL TREATMENT THE INSERTS IN DETAIL



INSERT P15

ref. n° 03080006

universal curette shape with round surface

INDICATIONS: supra- and subgingival concretions and biofilm removal. Recommended for the treatment of canine and anterior teeth. Debridement of deep periodontal pockets.



INSERT P16R

ref. n° 03080007

right angled periodontal curette

INDICATIONS: subgingival concretions and biofilm removal from furcations and deep pockets. Recommended for the treatment of molars and premolars.



INSERT P16L

ref. n° 03080008

left angled periodontal curette

INDICATIONS: subgingival concretions and biofilm removal from furcations and deep pockets. Recommended for the treatment of molars and premolars.

mectron s.p.a.
via Loreto 15/A, 16042 Carasco (Ge), Italy, tel +39 0185 35361,
fax +39 0185 351374, www.mectron.com, mectron@mectron.com



© Copyright mectron S.p.A., Carasco, Italy
All rights reserved. Texts, pictures and graphics of mectron brochures are protected by copyright and other protection laws. Without written approval of mectron S.p.A. the contents may not be copied, distributed, changed or made available to third parties for commercial purposes.

mectron
medical technology